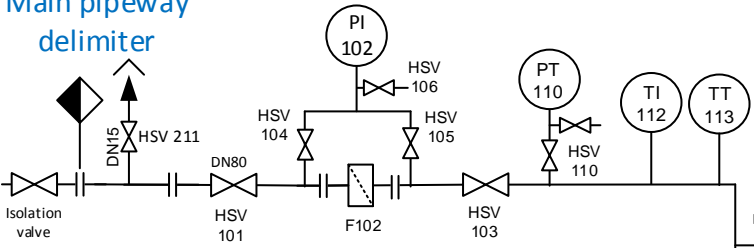
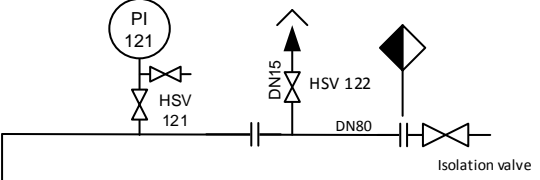


Main pipeway
delimiter

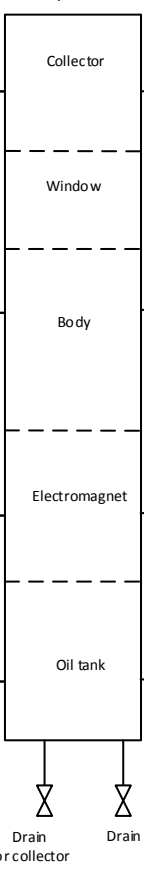
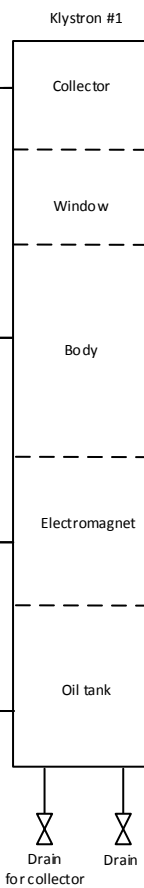


Main pipeway
delimiter



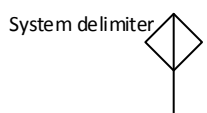
Sheet 2

Sheet 2



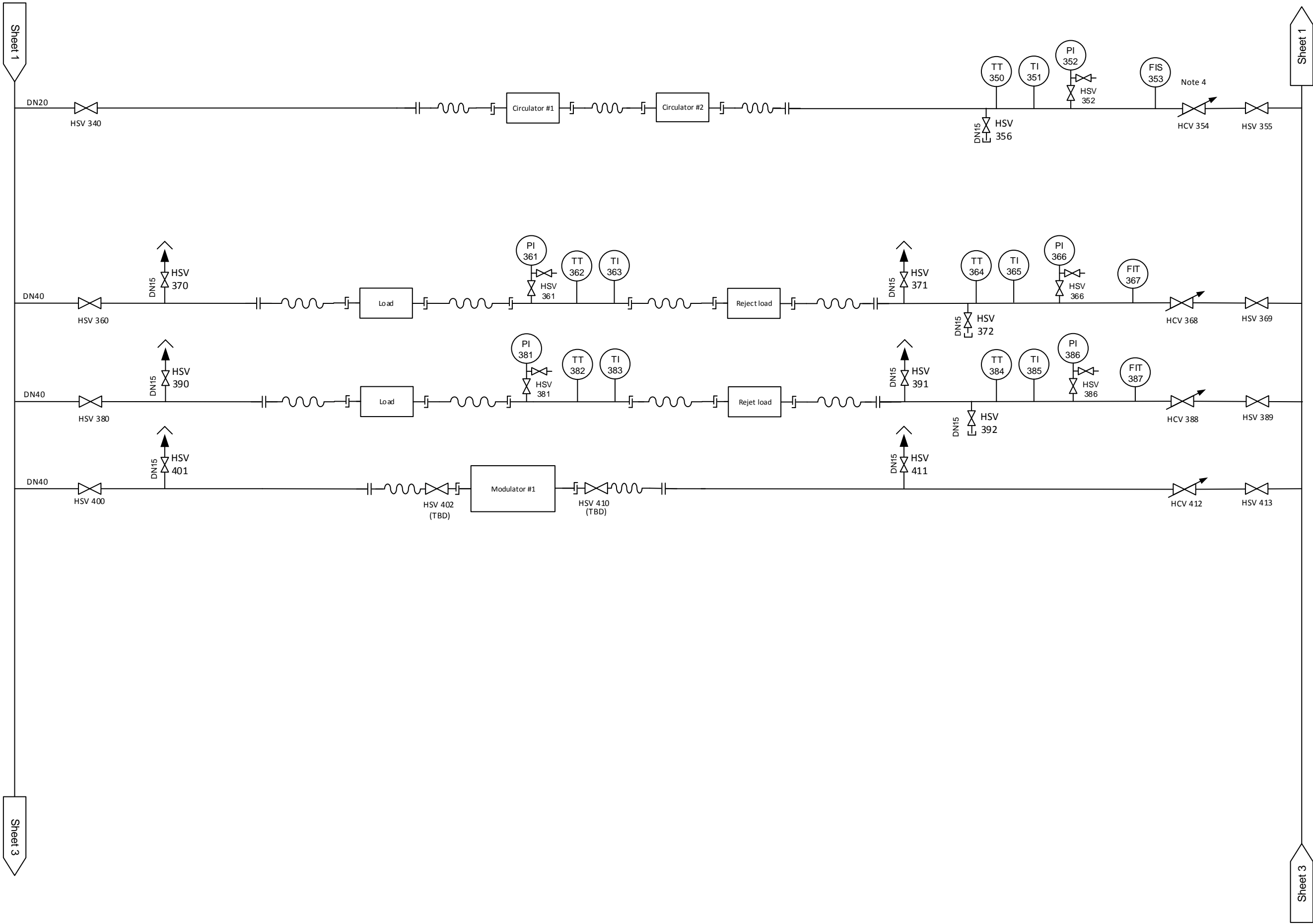
- Notes:
- 1. For Legend see ESS-003888.
 - 2. Air vents and drainage valves as required by piping routing.
 - 3. All instrument indicators to be positioned on a local panel with operators access.
 - 4. All FIS instruments to be of VA flow meter type including flow adjustment valve.

Design pressure 10 bar(g)
Design temp Max 50 °C



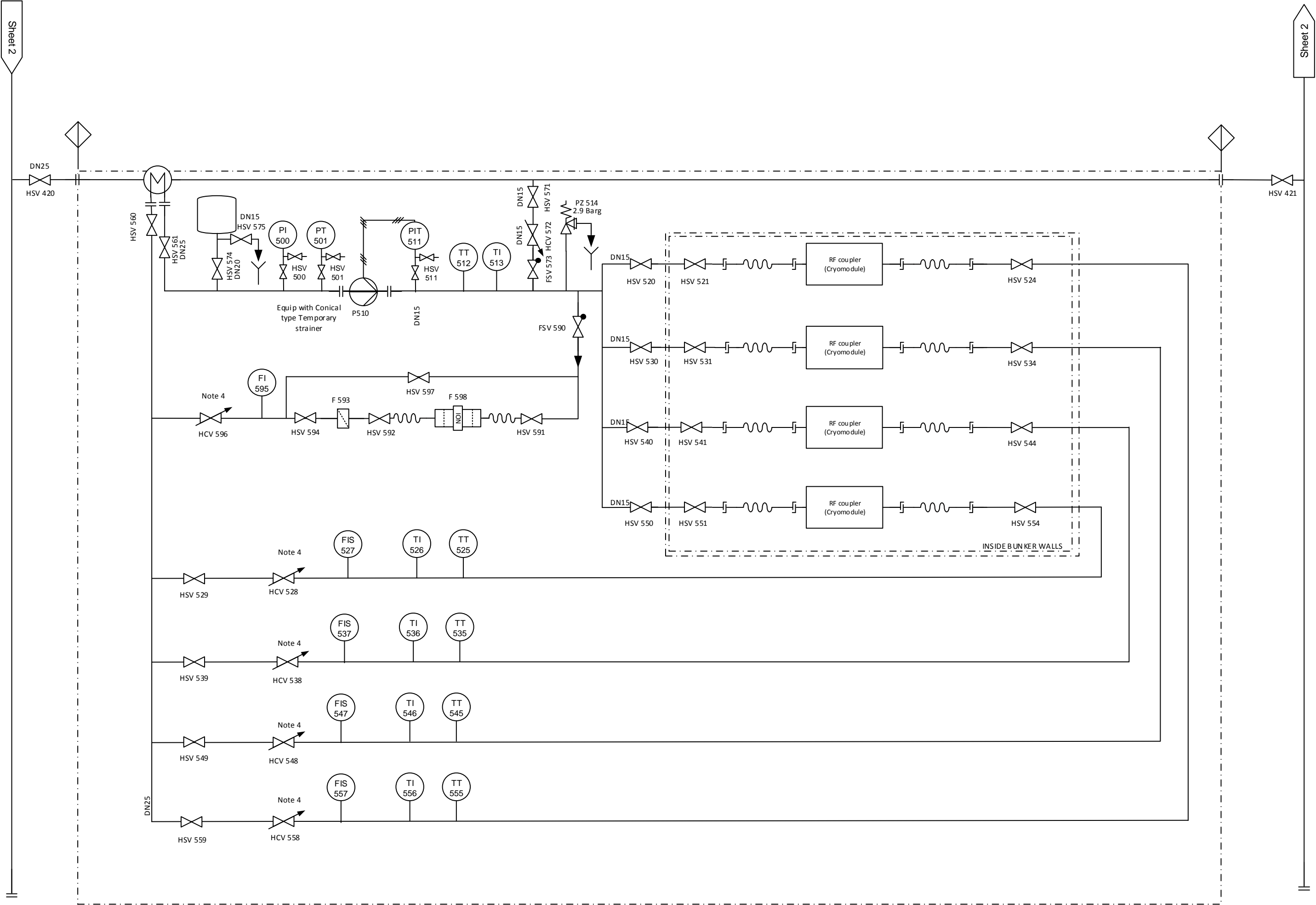
Title TS2 - Cryogenic test stand cooling system		Approved by -		Signature	
		Designed / changed by AC		Signature	
Type of drawing P&ID	Date (this version) 2017/04/19	Size A3	Page 1 of 3	Scale -	Drawing No ESS-0054492
				Revision 1.9	





Title TS2 - Cryogenic test stand cooling system		Approved by -		Signature	
		Designed / changed by AC		Signature	
Type of drawing P&ID	Date (this version) 2017/04/19	Size A3	Page 2 of 3	Scale -	Drawing No ESS-0054492
				Revision 1.9	





Sheet 2

Title TS2 - Cryogenic test stand cooling system		Approved by -		Signature	
		Designed / changed by AC		Signature	
Type of drawing P&ID	Date (this version) 2017/04/19	Size A3	Page 3 of 3	Scale -	Drawing No ESS-0054492
				Revision 1.9	

